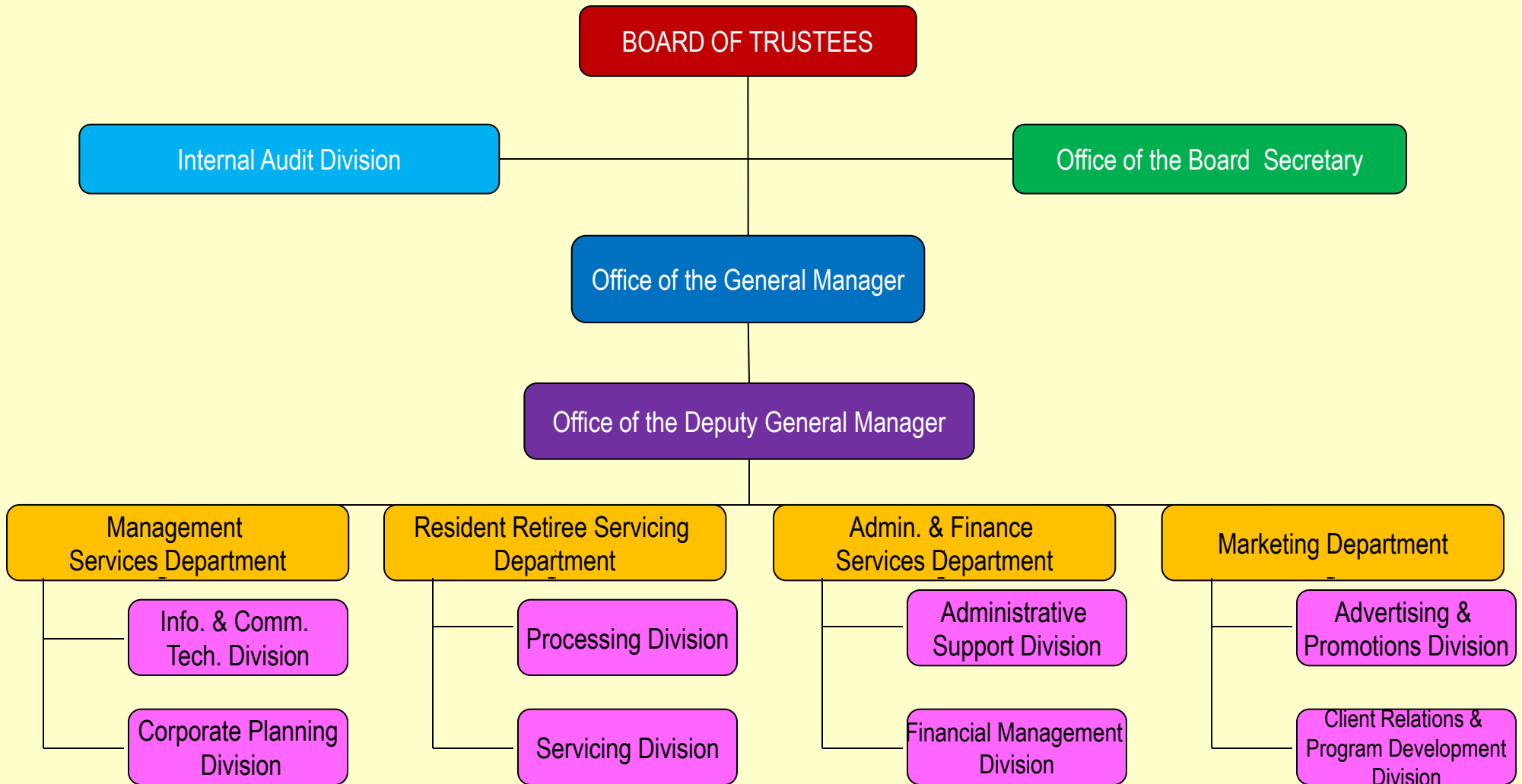


# PHILIPPINE RETIREMENT AUTHORITY GCG APPROVED STAFFING PATTERN



# OFFICE OF THE BOARD SECRETARY



1-Board Secretary IV (SG 22)

# INTERNAL AUDIT DIVISION



Internal Audit Division

1-Internal Auditor V (SG 24)  
1-Internal Auditor IV (SG 22)  
1-Internal Auditor III (SG 18)  
1-Internal Auditor II (SG 15)

# OFFICE OF THE GENERAL MANAGER

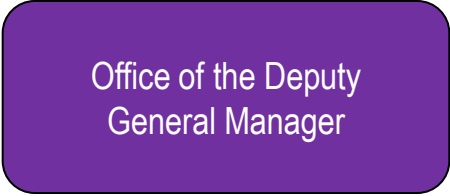


Office of the  
General Manager

1-General Manager (SG 29)  
1-Attorney (SG 23)  
1-Executive Assistant III (SG 20)\*  
1-Attorney II (SG 18)  
1-Private Secretary I (SG 11)\*  
1-Chauffeur (SG 5)\*

\*Incumbent of position is coterminous with the Official being served

# OFFICE OF THE DEPUTY GENERAL MANAGER

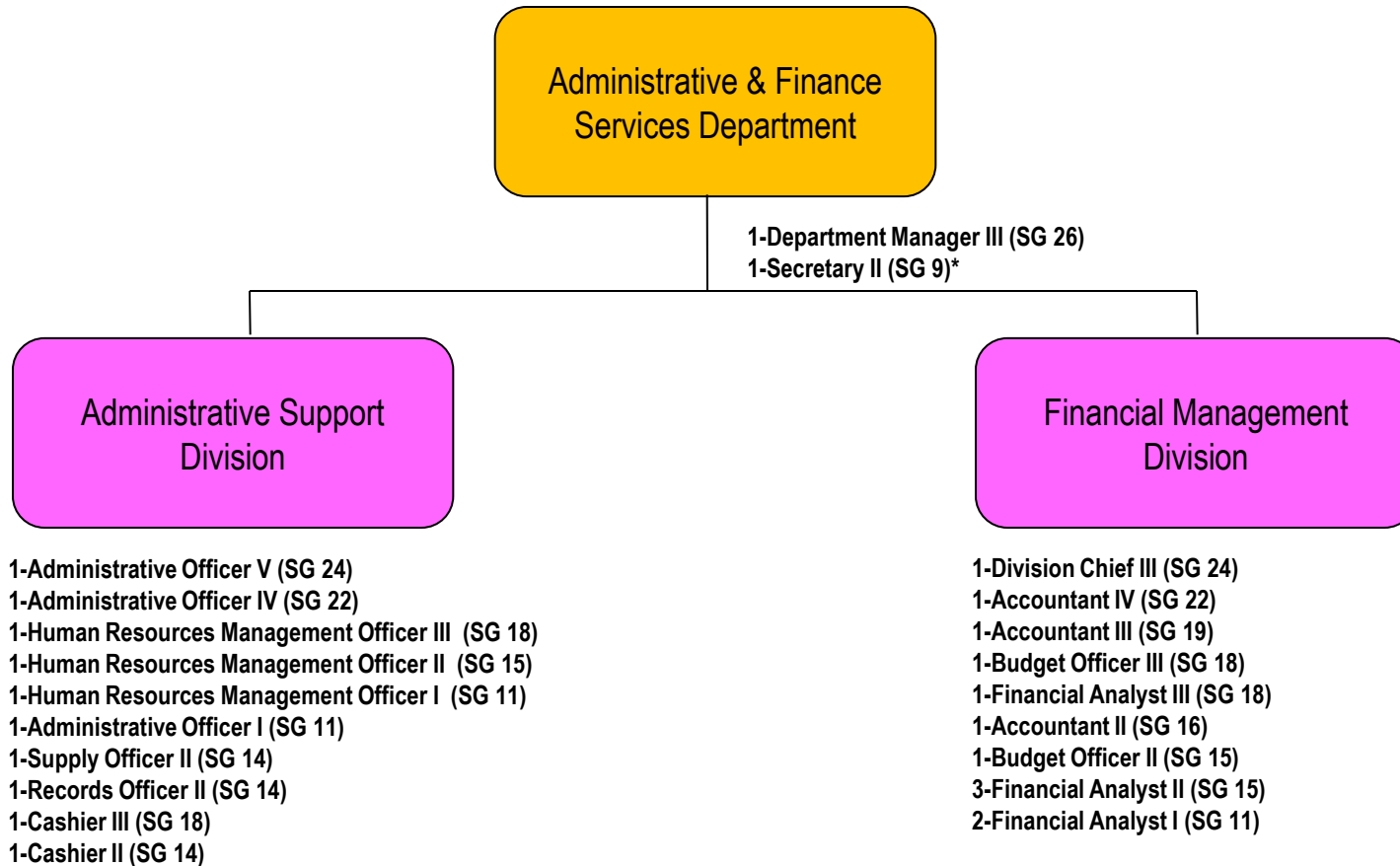


Office of the Deputy  
General Manager

1-Deputy General Manager (SG 27)  
1-Executive Assistant II (SG 17) \*  
1-Secretary II (SG 9)\*  
1-Driver (SG 4)\*

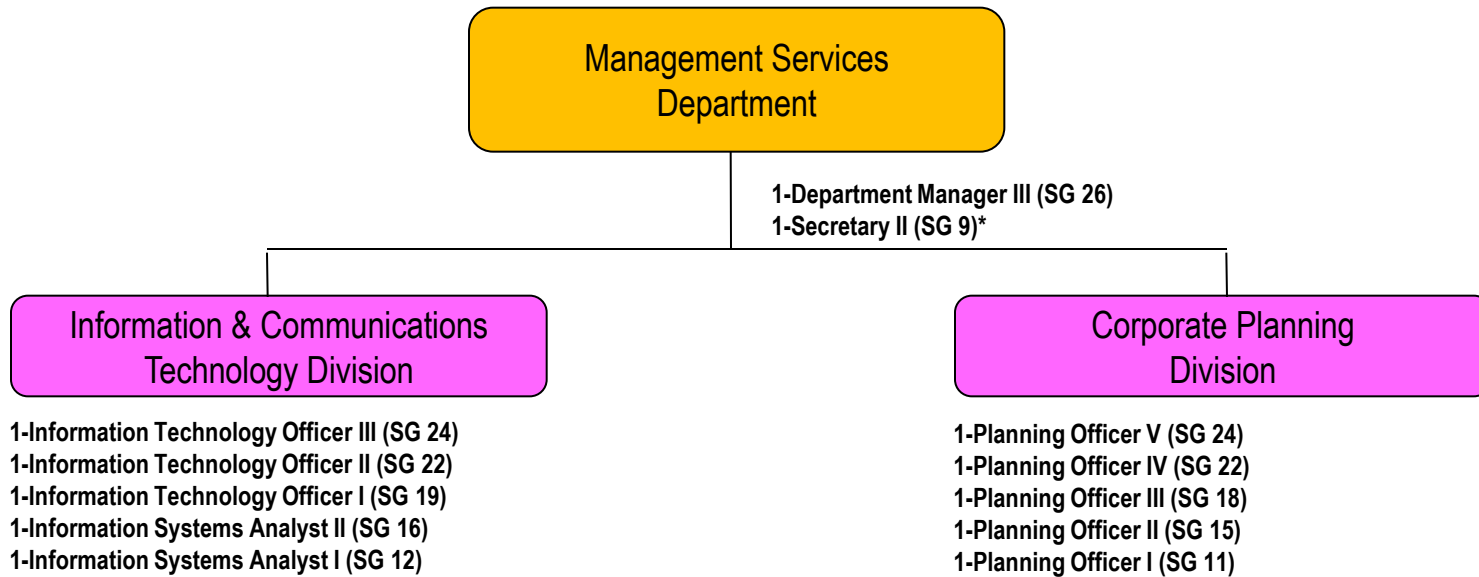
\*Incumbent of position is coterminous with the Official being served

# ADMINISTRATIVE & FINANCE SERVICES DEPARTMENT



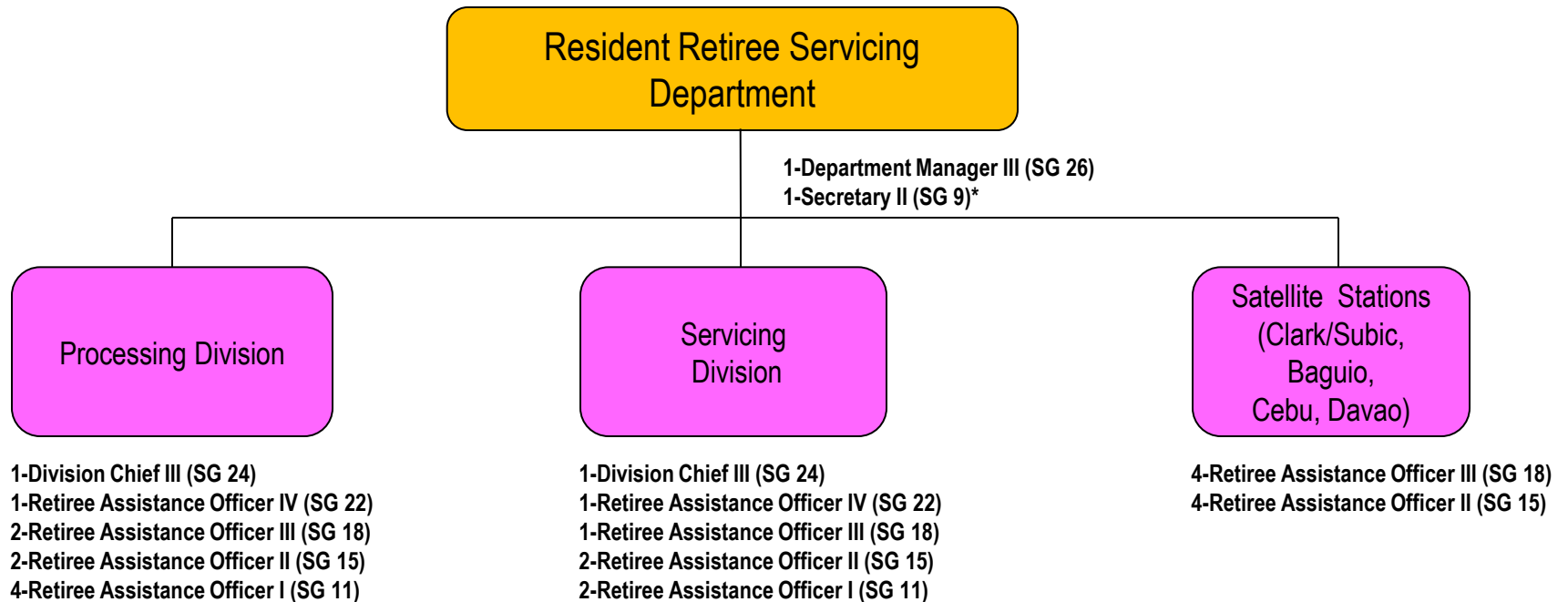
\*Incumbent of position is coterminous with the Official being served

# MANAGEMENT SERVICES DEPARTMENT



\*Incumbent of position is coterminous with the Official being served

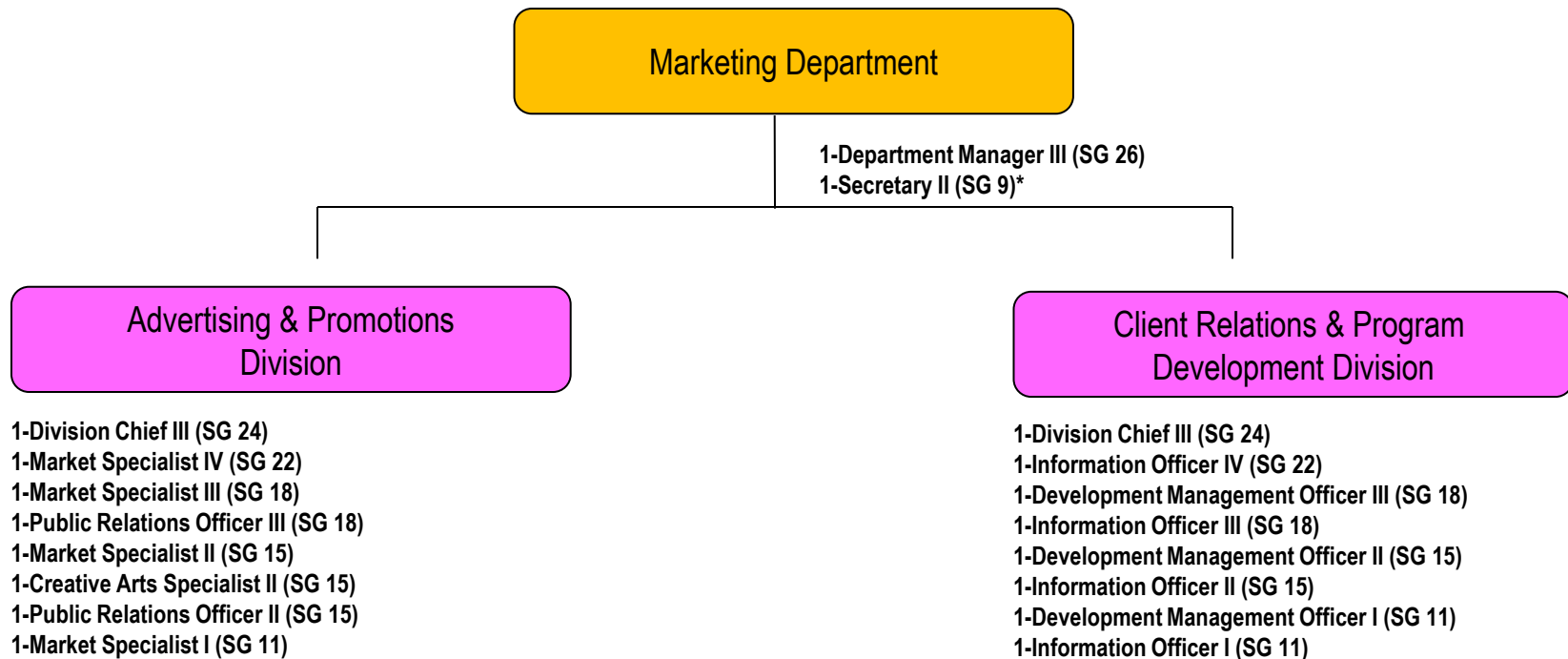
# RESIDENT RETIREE SERVICING DEPARTMENT



\*Incumbent of position is coterminous with the Official being served



# MARKETING DEPARTMENT



\*Incumbent of position is coterminous with the Official being served